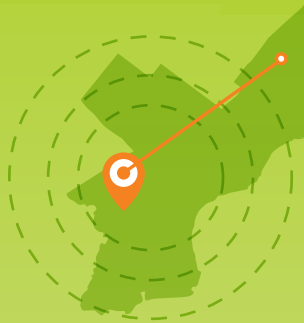


Smith Preserving Play:

A CAMPAIGN FOR THE NEXT GENERATION



Smith serves EVERY ZIP CODE IN PHILADELPHIA & HUNDREDS MORE AROUND THE WORLD



FRONT LAWN TRANSFORMATION
AN ADDITIONAL 2.5 ACRES OF SPACE PROGRAMMED FOR NATURE PLAY

2.5 ACRES



PLAYHOUSE RENOVATIONS WILL CREATE 5,000^{SQ} FT OF PROGRAMMING SPACE



Smith hosts 220,000 VISITORS ANNUALLY

↑ 100% increase IN 4 YEARS

\$2M ENDOWMENT WILL ENSURE THAT SMITH IS SUSTAINABLE FOR ANOTHER 100 YEARS

THE NEW URBAN NATURE PRESCHOOL FULL-DAY, FULL-YEAR PRESCHOOL FOR 40 CHILDREN

WILL SERVE AS A DEMONSTRATION SITE for educators, improving educational practices & impacting thousands of additional children



WHERE WE ARE NOW:

SMITH HAS PROVIDED EQUAL OPPORTUNITY FOR UNSTRUCTURED PLAY SINCE 1899

WHERE WE'RE GOING:

OUR PRESERVING PLAY CAMPAIGN SEEKS TO EXPAND OUR PROGRAMMING & REACH, PRESERVE OUR LEGACY & PROVIDE PLAY FOR THE NEXT GENERATION.

COST OF PLAY AT SMITH

→ FREE ←



BUT...

\$1,780 / DAY OPERATING COSTS



SMITH NATURE PRESCHOOL CLASSROOM



4,000 square feet of unused (and unusable) space on the lower level of the Playhouse will be transformed into classrooms as part of Smith’s collaboration with the Delaware Valley Association for the Education of Young Children (DVAEYC) to create an Urban Nature Preschool and Teacher Training Lab.

The preschool will serve 40 children, ages 3-5, with full-day, full-year programming that meets the needs of working families.

The classrooms will be naturally lit and the design will emphasize visibility and physical connections to the outdoors.



SMITH NATURE PRESCHOOL OUTDOOR CLASSROOM



The indoor classrooms for the Urban Nature Preschool will be complemented with outdoor play and learning space.

Exploration of the natural environment is the driving principal for the curriculum and children enrolled in the preschool will spend a significant time outdoors every day.

Preserving Play



SMITH PLAYGROUND ENTRANCE TO FAMILY RESTROOMS



Public restrooms on Smith's lower level will be renovated and expanded.

Restrooms will be accessible via a new entry on the south side of the building for easy access from the Playground, as well as by stair inside the Playhouse.



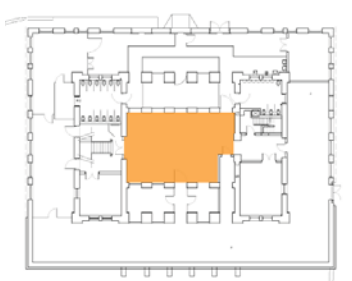
SMITH PLAYHOUSE - SMITHVILLE



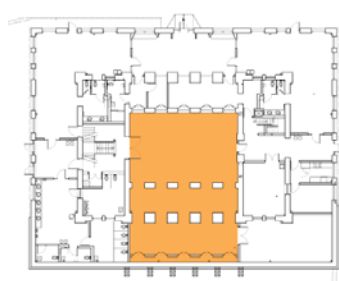
Smithville on Smith's lower level provides opportunities for gross motor development and has been a treasured part of the Smith experience for generations.

Planned renovations will double the square feet devoted to this public use space.

Archways will be opened to allow natural light to spill in from existing skylights, and new equipment will provide fun ways to run, climb, jump, and pedal inside the Playhouse.



EXISTING SMITHVILLE SPACE USE



PROPOSED SMITHVILLE SPACE USE

Preserving Play



SMITH PLAYHOUSE - STAFF OFFICE, MEETING, AND WORK SPACES



Administrative offices currently located on the 2nd floor will be moved up to the spacious and underutilized 3rd floor, creating approximately 1,000 square feet for new play spaces.

A second stairway will be added for safe egress up and down. In addition to accessible facilities on the lower level and 1st floor, new meeting facilities on the 3rd floor will be used by Smith and preschool staff, and available for community partners.



EXISTING USE OF 3RD FLOOR



PROPOSED USE OF 3RD FLOOR